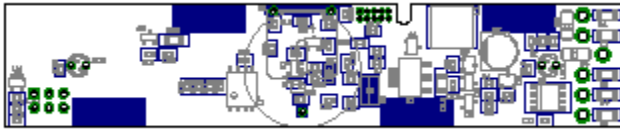




## MobilEye™ CANFi-M Embedded Module



## Description

The CANFi-M embedded module is a derivative of the MobilEye Embedded CAN/Wi-Fi module, designed for Mercury Marine.

Designed with affordability in mind, this CAN to Wi-Fi device enables mobile devices to interact with CAN networks. With 4MB of on-board storage, the device can also be used for basic data logging needs. Capable of logging at rates of 1ms, this device is an ideal choice for any CAN bus environment. Built in key switch detection and keep-alive circuitry ensure clean shutdowns and proper file closures.

## Features

- CAN to Wi-Fi (802.11)
- CAN data logging
- Real-time clock with battery backup providing date/time information for log files
- Key switch detection
- 2 Green status LED's
- Firmware upgrades via Wi-Fi

## Microcontroller:

- LPC 1759 ARM Cortex-M3 running at 120 MHz
- 512KB on-chip flash memory
- 96kB RAM

## CAN:

- Single High Speed CAN 2.0B
- Full implementation of the CAN-Protocol in accordance with the CAN Specification Version 2.0B, ISO 11898-1
- Up to 1Mbit baud rate

## Wi-Fi:

- 802.11 b/g
- Secure Wi-Fi authentication schemes (WEP/WPA/WPA2)
- Protocols include DHCP,DNS,HTTP,TCP,UDP
- Adjustable output power -2dBm to +12dBm

## Operating Environment:

- 6.5-27VDC
- -40°C to +85°C

## User Interface:

- 2 Green LED's

## Connector:

- Integrated 5 wire harness (supplied by Mercury) and potted to the PCB during assembly.

## On-Board Storage:

- 32Mbit (4MB) Serial Flash
- 9kb EEPROM

## Other:

- Real-time clock with battery backup
- Key switch detection through analog input